



Clic-clak[®] 40 con antivento Versione 1 - Standard

Istruzioni di montaggio per zanzariera

distinta

- 1 cassonetto completo
- 2 guide
- 1 coppia zoccoli clic/clak[®]
- 4 viti STEI M4X8 a punta UNI5923
- 1 chiave esagonale 2,5 mm
- 1 spazzolino per cassonetto
- 1 coppia cuffie telescopiche
- 2 mollette

attenzione

Prima di effettuare il montaggio della zanzariera, è necessario abbinare ad ogni cassonetto la corrispondente coppia di guide

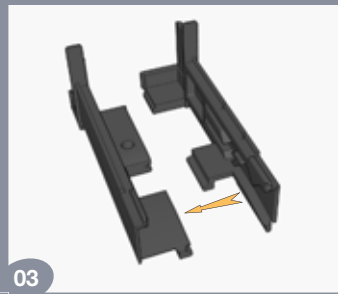
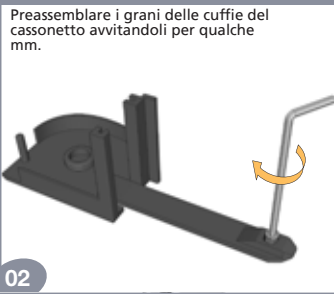
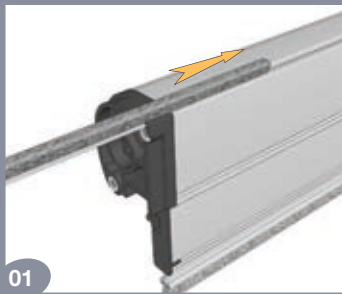


Cassonetto

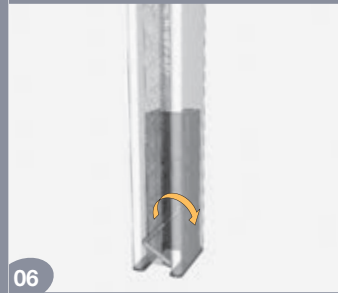
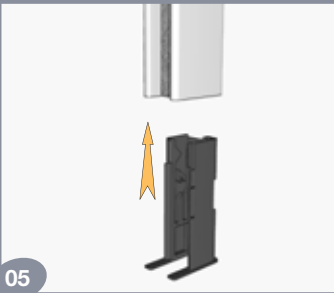
Il criterio per l'abbinamento è sempre lo stesso, a prescindere dal modello della zanzariera che può essere diverso da quello raffigurato

Questo codice deve essere uguale

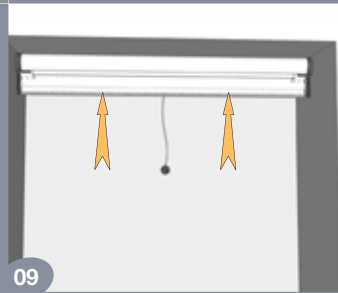
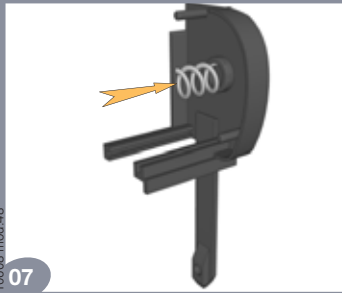
Guida



Preassemblare i grani delle cuffie del cassonetto avvitandoli per qualche mm.



Preassemblare i grani degli zoccoli avvitandoli per qualche mm.

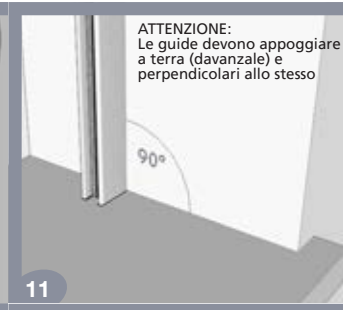
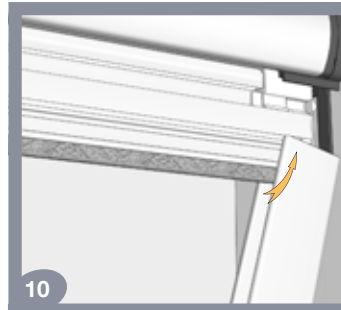


07

08

09

L'azienda si riserva di apportare modifiche senza preavviso.



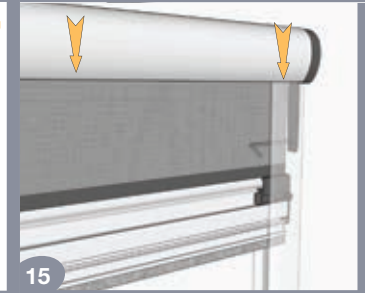
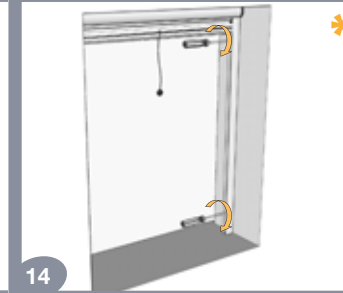
ATTENZIONE:
Le guide devono appoggiare a terra (davanzale) e perpendicolari allo stesso



10

11

12

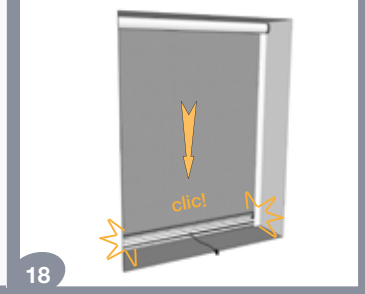


13

14

15

In caso di fuori squadra nel lato superiore del vano si consiglia di agganciare il cassonetto alle guide usando il grano in dotazione.



16

17

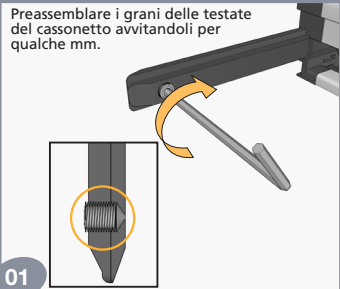
18



distinta

- 1 cassetto completo
- 1 profilo battuta
- 1 coppia coperchi testate
- 2 guide
- 1 coppia zoccoli fissi
- 4 viti STEI M4X8 a punta UNI5923
- 1 coppia zoccoli regolabili con angoli
- 4 zanche con viti e dadi
- 1 chiave esagonale 2,5 mm

Preassemblare i grani delle testate del cassetto avvitandoli per qualche mm.

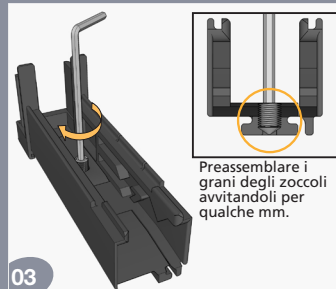


01

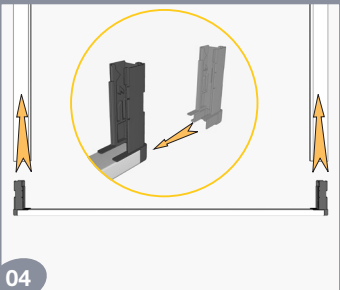
VERSIONE CON ZOCOLI FISSI



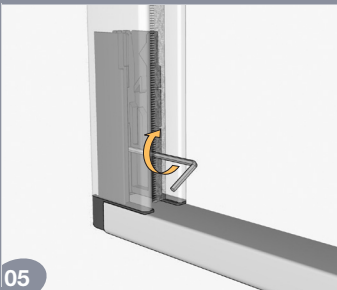
02



03



04

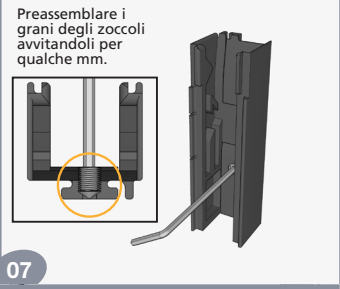


05

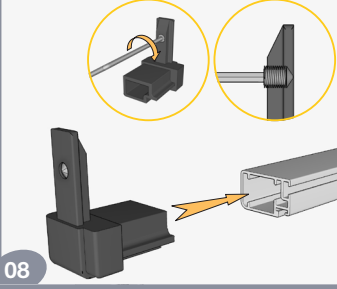
VERSIONE CON ZOCOLI REGOLABILI



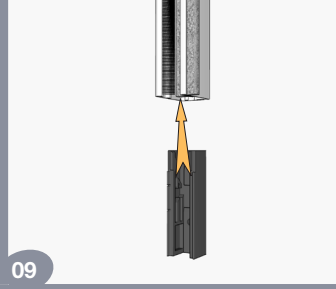
06



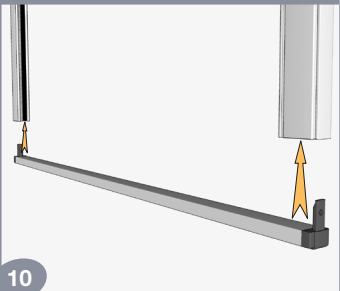
07



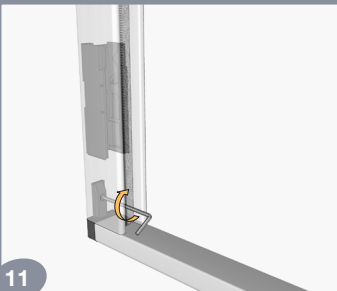
08



09

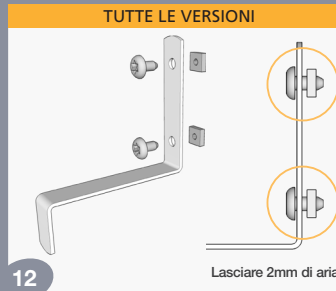


10



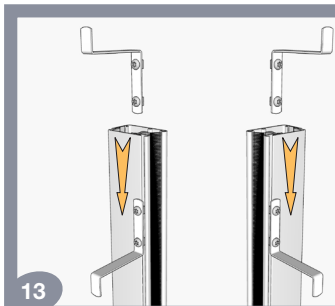
11

TUTTE LE VERSIONI

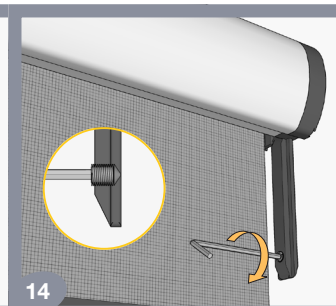


12

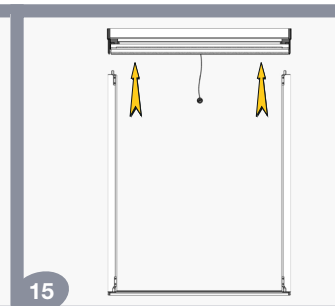
L'azienda si riserva di apportare modifiche senza preavviso.



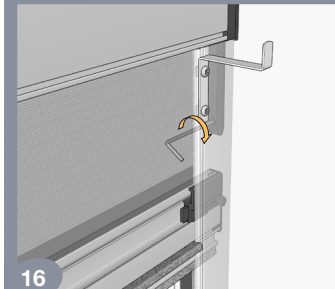
13



14



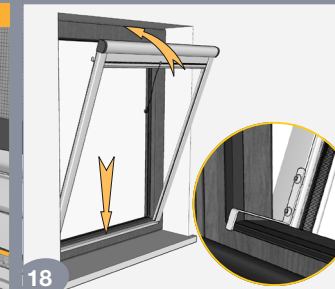
15



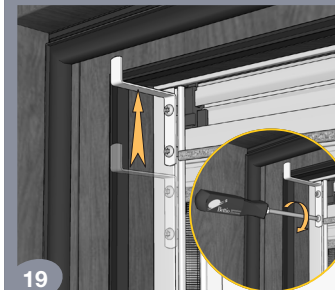
16



17



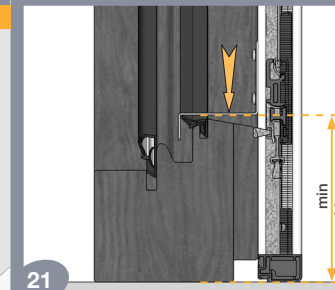
18



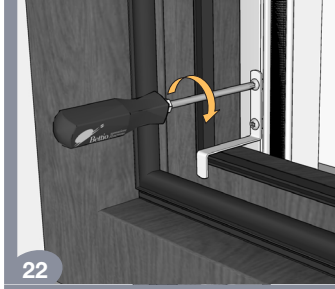
19



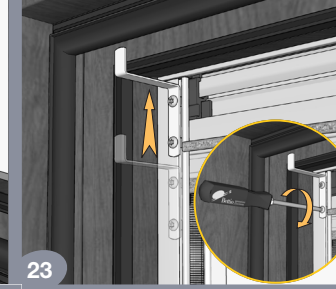
20



21



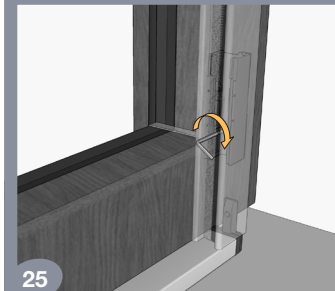
22



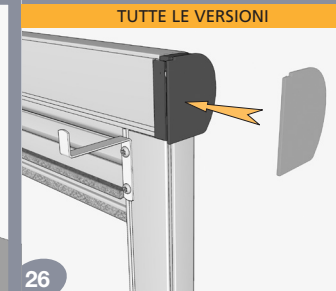
23



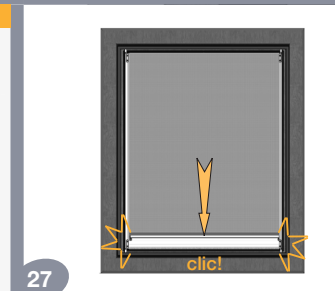
24



25



26



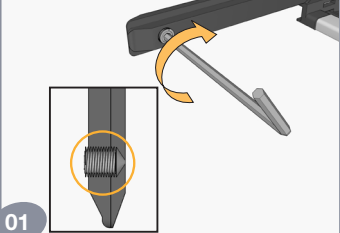
27



distinta

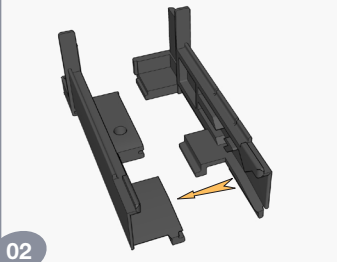
- 1 cassonetto completo
- 2 guide
- 1 profilo battuta
- 1 coppia zoccoli fissi
- 1 coppia zoccoli regolabili
- 1 coppia angoli
- 1 coppia coperchi testate
- 6 viti STEI M5X6 a punta UNI5923
- 6 squadrette frontali
- 3 coppie distanziali squadrette
- 1 chiave esagonale 2,5 mm

Preassemblare i grani delle testate del cassonetto avvitandoli per qualche mm.

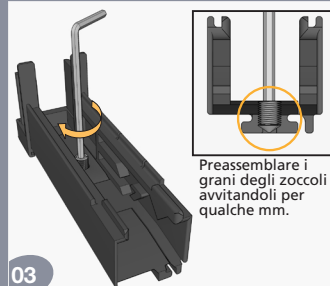


01

VERSIONE CON ZOCOLI FISSI

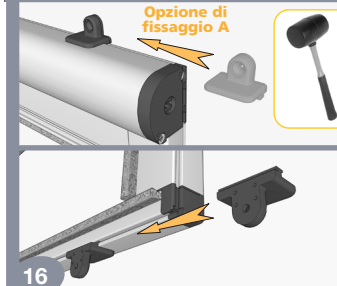


02

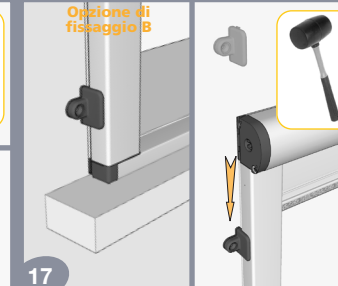


Preassemblare i grani degli zoccoli avvitandoli per qualche mm.

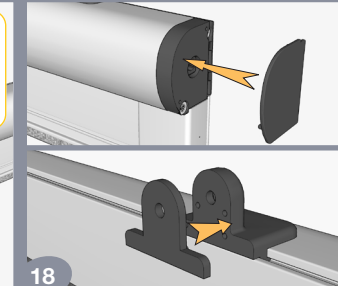
03



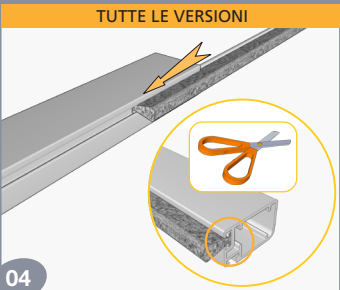
13



14



15



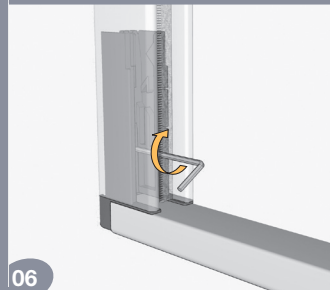
TUTTE LE VERSIONI

04



VERSIONE CON ZOCOLI FISSI

05

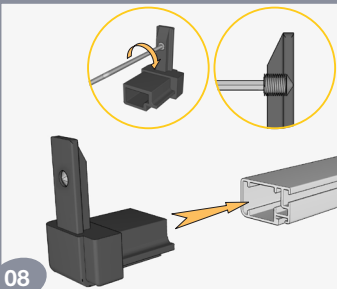


06

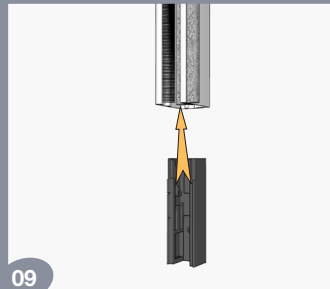


VERSIONE CON ZOCOLI REGOLABILI

07



08



09



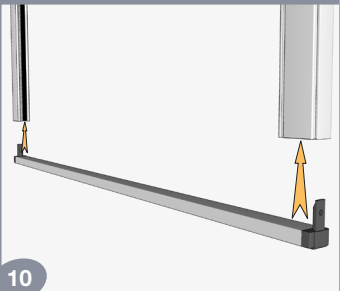
16



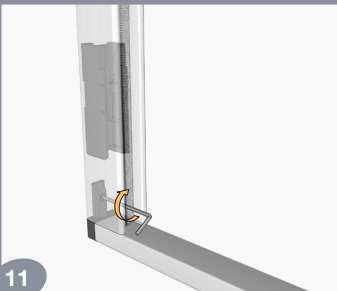
17



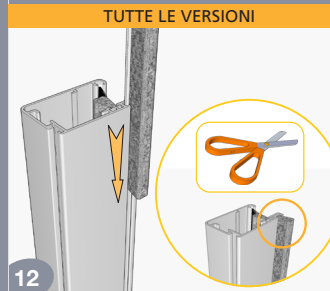
18



10

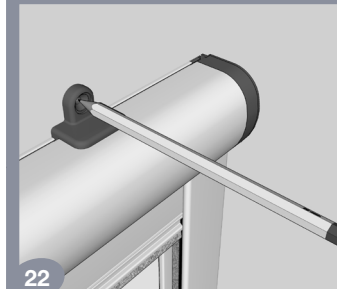


11

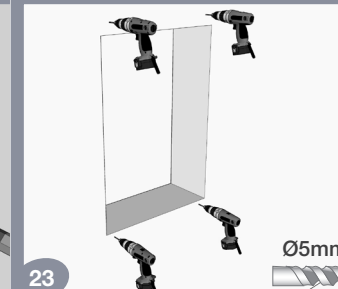


TUTTE LE VERSIONI

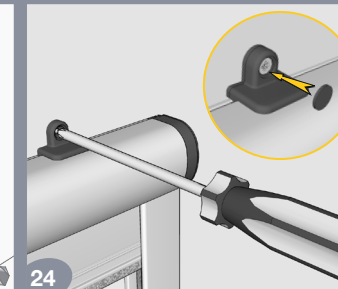
12



19



20



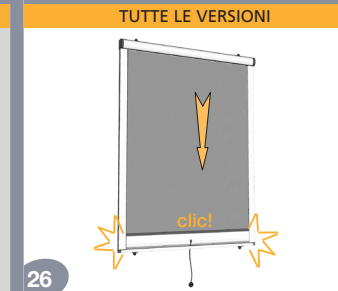
21



22

VERSIONE CON ZOCOLI REGOLABILI

Regolare secondo le proprie esigenze.



23

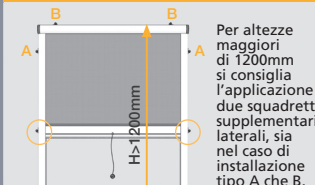
TUTTE LE VERSIONI

Per altezze maggiori di 1200mm si consiglia l'applicazione di due squadrette supplementari laterali, sia nel caso di installazione tipo A che B.



24

ATTENZIONE



27

25

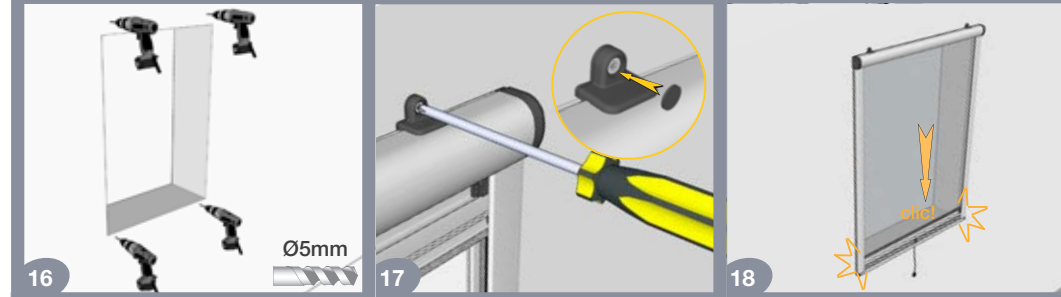
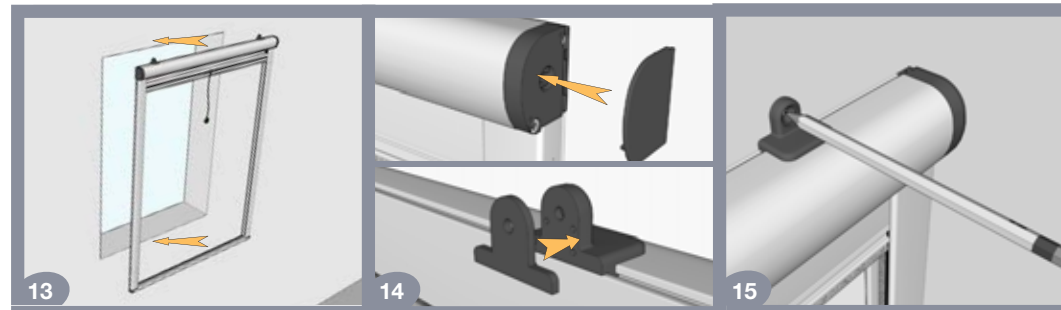
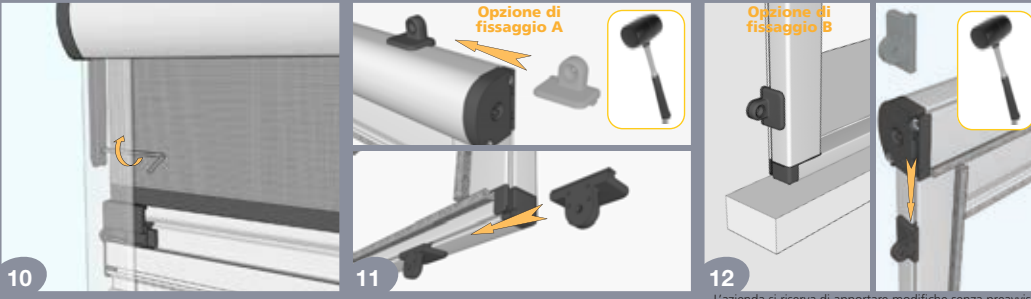
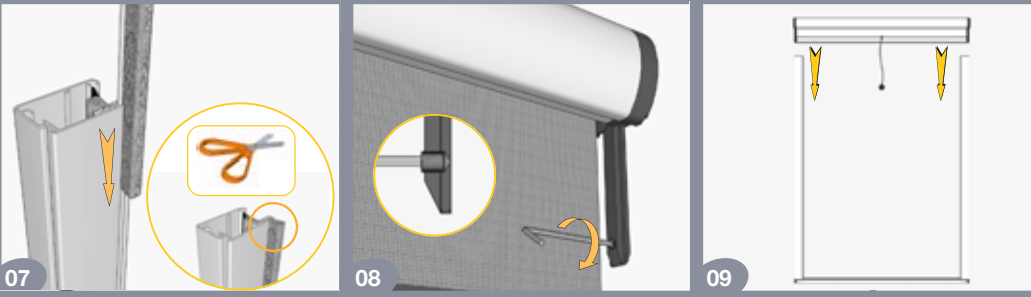
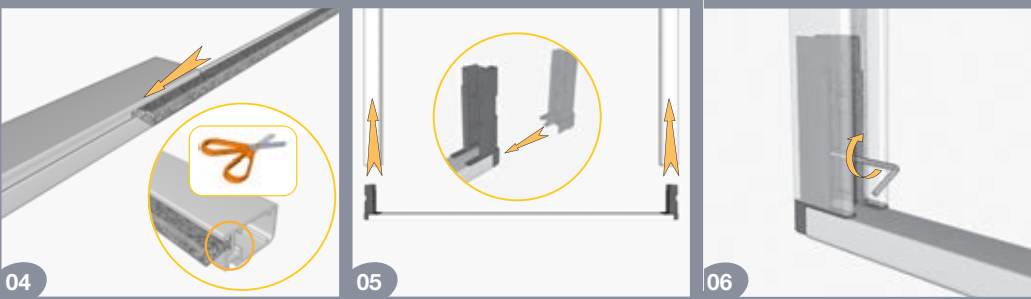
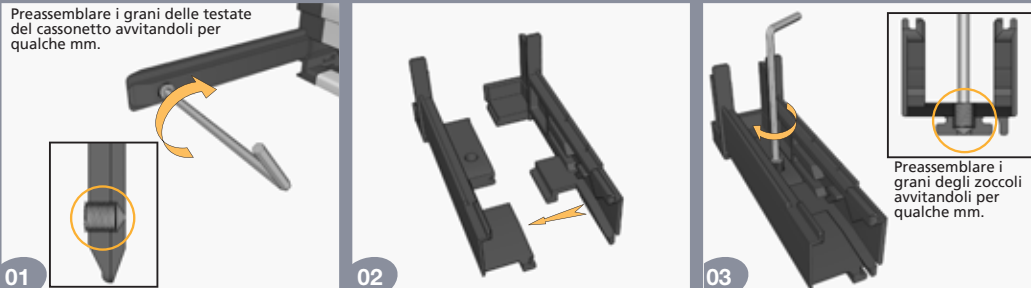
26



distinta

- 1 cassonetto completo
- 2 guide
- 1 profilo battuta
- 1 coppia zoccoli fissi
- 1 coppia coperchi testate
- 4 viti STEI MSX6 a punta UNI5927
- 6 squadrette frontali
- 3 coppie distanziali squadrette
- 1 chiave esagonale 2,5 mm
- 1 spazzolino grigio

Preassemblare i grani delle testate del cassonetto avvitandoli per qualche mm.





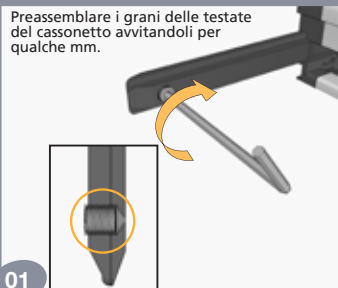
distinta

- 1 cassonetto completo
- 2 guide
- 1 profilo battuta
- 1 coppia zoccoli fissi

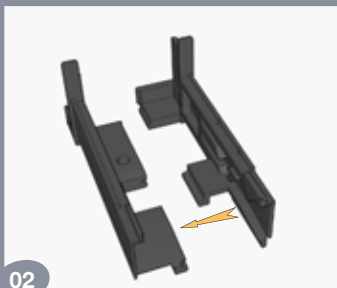
- 4 perni aggancio completo
- 4 copriforo normale
- 4 copriforo con spondina
- 4 viti STEI M5X6 a punta UNI5927

- 1 chiave esagonale 2,5 mm
- 1 spazzolino grigio

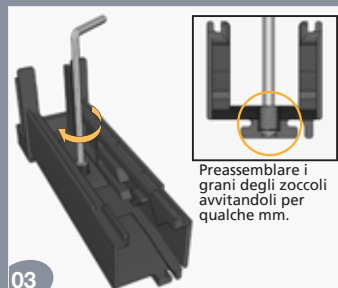
Preassemblare i grani delle testate del cassonetto avvitandoli per qualche mm.



01

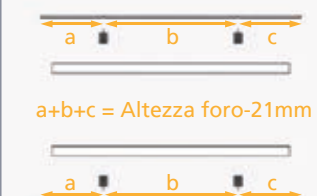


02



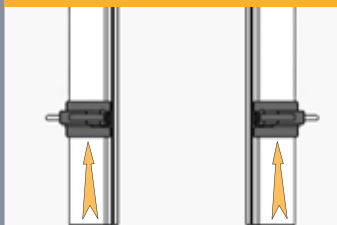
03

Scegliere la posizione dei ganci secondo le proprie esigenze e tagliare gli spazzolini rispettando la formula:



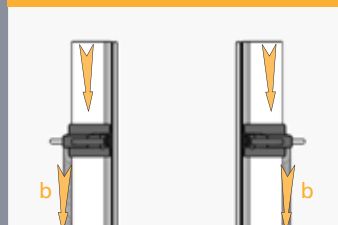
04

Inserire i ganci inferiori fino all'altezza calcolata

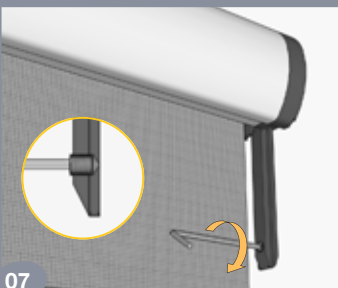


05

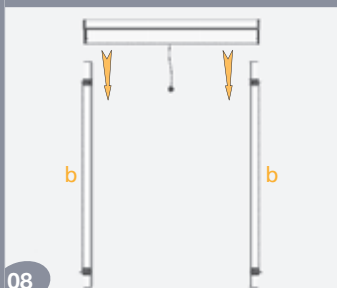
Inserire gli spazzolini (b) e i ganci superiori.



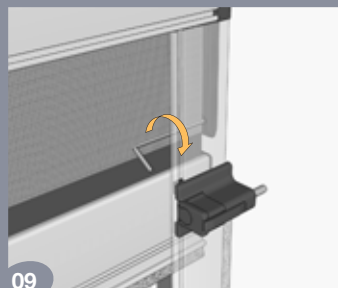
06



07



08

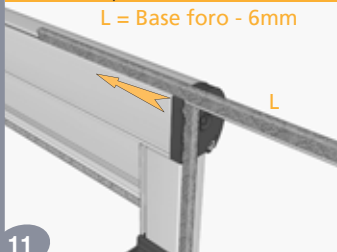


09



10

Tagliare lo spazzolino superiore rispettando la formula:

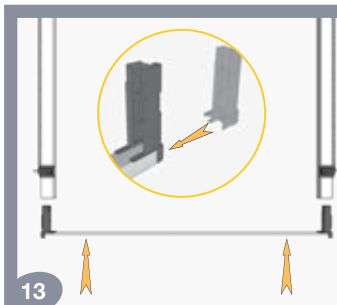


11

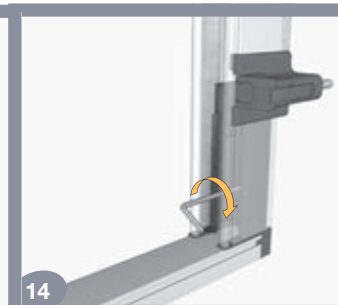


12

L'azienda si riserva di apportare modifiche senza preavviso.



13

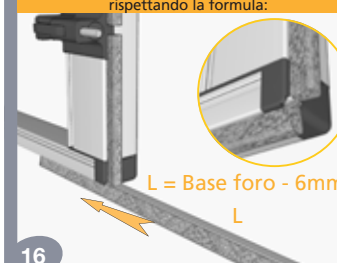


14

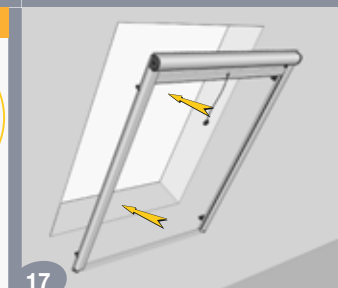


15

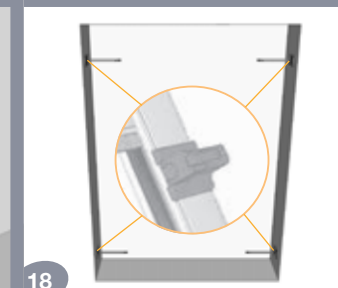
Tagliare lo spazzolino inferiore rispettando la formula:



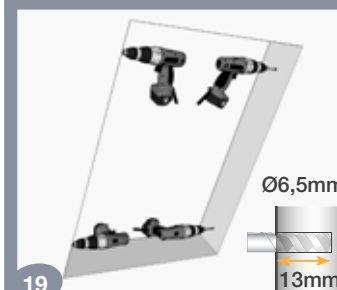
16



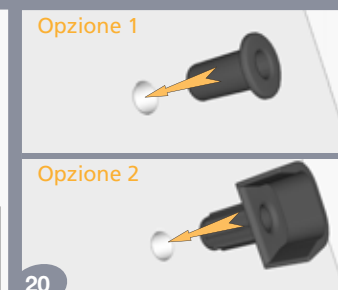
17



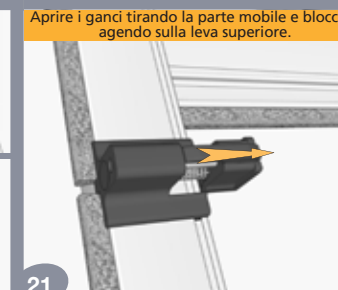
18



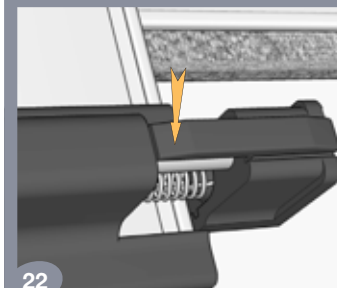
19



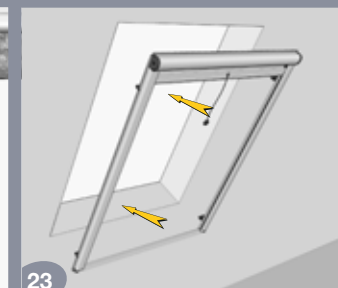
20



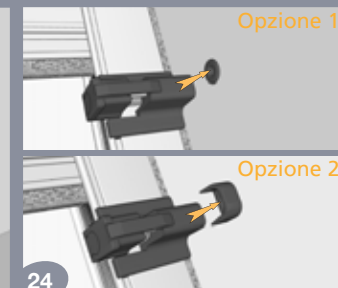
21



22



23

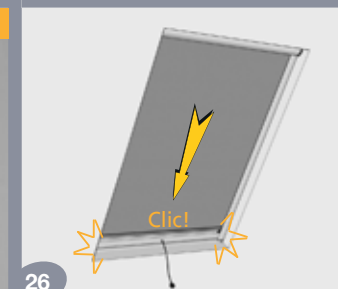


24

Sbloccare i ganci agendosi sulla parte posteriore della leva



25



26

